



# GMT MONTHLY MEMBERSHIP PROGRESS REPORT

Results as of: 4/30/2019

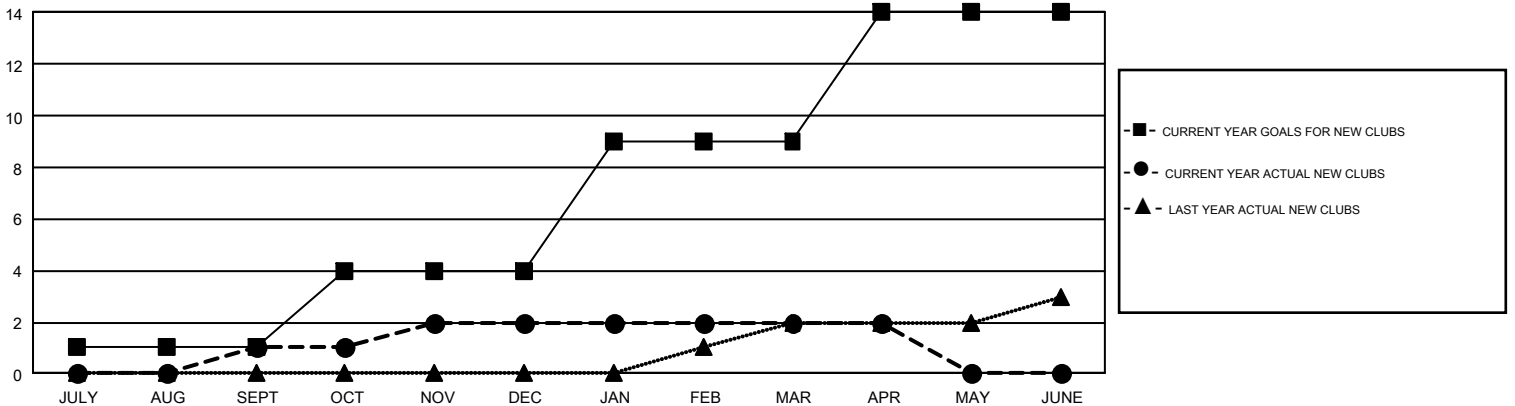
## GMT Constitutional Area 2, Group A

GMT: GORDON ZIEGLER

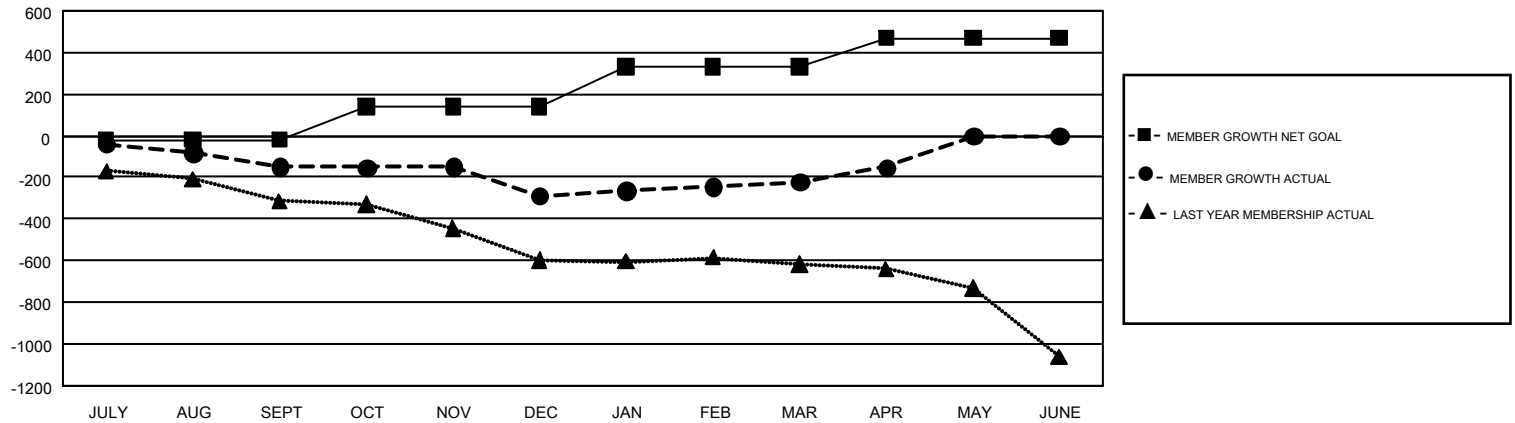
REPORT DOES NOT INCLUDE CLUBS IN UNDISTRICTED AREAS.

Clubs				Members			
RESULTS FOR 2018-2019				RESULTS FOR 2018-2019			
QUARTER	NEW CLUB GOAL	NEW CLUBS	DROPPED CLUBS	QUARTER	MEMBER GROWTH NET GOAL	MEMBER GROWTH ACTUAL	DROPPED MEMBERS ACTUAL (including transfers)
JULY/AUG/SEPT	1	1	1	JULY/AUG/SEPT	-20	271	361
OCT/NOV/DEC	3	1	4	OCT/NOV/DEC	158	399	509
JAN/FEB/MAR	5	0	0	JAN/FEB/MAR	192	368	270
APR/MAY/JUNE	5	0	1	APR/MAY/JUNE	139	197	119

GOALS AND ACTUAL NEW CLUBS CUMULATIVE



GOALS AND ACTUAL MEMBERS CUMULATIVE



DROPPED CLUBS: 6	370 CLUBS OF 679 ADDED 1 OR MORE NEW MEMBERS	<b>GENDER DISTRIBUTION</b> MALE 10,639 (66.89%) FEMALE 5,267 (33.11%)
<b>DROPPED MEMBERS</b> DECEASED 186 CLUB CANCELLED 34 OTHER 1,039 <b>TOTAL 1,259</b>	<a href="#">CLICK HERE FOR CUMULATIVE MEMBERSHIP DATA</a>	TOTAL FAMILY UNIT MEMBERS 3,046 FAMILY MEMBERS PAYING HALF DUES 1,545